



**Make creation much easier !**

The background features a large, light blue graphic consisting of several overlapping, curved, arrow-like shapes that form a circular, swirling pattern. The word "Createbot" is centered within this graphic.

**Createbot**

3D Printer

3D Printer Pen

3D Printer Filament

The logo for Createbot, featuring the word "Createbot" in white text on a blue rectangular background.

**Createbot**

ABOUT US

Createbot is one of the brands of Yueqing Kanin Electric Co., Ltd. which takes the lead in entering the 3D printing field in China. Since the first 3D printers was launched in July 2012, through cooperating with scientific research teams in excellent universities of science and technology at home and abroad.

The company focuses on product development and international advanced 3D printing technology, currently has 3 invention patents, more than 20 utility model patents, more than 20 appearance patents, 6 new and high technology products.

01

3D PRINTER SUPER MINI

02

3D PRINTER MINI MID MAX

03

3D PRINTER S3 S1

04

3D PRINTER PEN

05

3D PRINTER FILAMENT

06

SERVICE

07

CONTACT

**Createbot**

**3D Printer**  
Super mini

**01**





# Super Mini

1. Have 5 colors to choose.
2. Tiny and only 3kg.
3. Made of firm metal, get better stability.
4. Semi-hidden touchscreen display, accord with ergonomics principles.
5. One nozzle shield and three covers for machine, safer for children.
6. With X axis linear guide, transmission becomes accurate, get models of high precision.



Low noise:  
noise less than  
60 db



USB  
printing



color  
screen



Soft magnetic  
plate



Metal  
case



One year  
warranty

## Technical Specifications

Machine Color	Black,Blue,White,Purple,Green
Build Size	85*80*94mm
Machine Size	188*188*230mm
Printing Speed	20-60mm/s
Printing Precision	0.1mm
Layer Thickness	0.05-0.3mm
Model Material	PLA filament
Voltage	AC 100V-240V
Power	50W
Nozzle Size	0.4mm
Extruder Velocity	1
Extruder Temperature	230 C (Max260 C)
Best Printing Temperature	≥25 C
Precision	Z-axis0.002mm XY-axis0.01mm
3D Files Format	STL,OBJ,Gcode
Technology	Fused Deposition Modeling
Workstation Compatibility	Windows /Linux
Connection	SD card or USB connection
Software	Createbot software/Cura/Slic3r
Packing Size	260*260*370mm
N.W.:	3kg
G.W.:	5kg

**Createbot**

**3D Printer**  
Mini Mid Max

02





# MINI

1. With color touchscreen, heated bed and single extruder.
2. Light weight, easy to carry.
3. Multi-device connection: USB connection; Also available for stand-alone printing: SD card.
4. Enclosed metal structure combined with PC covers, minimize the bend of big model.
5. The printing precision is 0.1-0.2mm, which assure the printing appearance is fine and smooth, assure the model is of high quality & high accuracy.
6. Good choice for personal customization.

Technical Specifications	
Machine Color	Black
Build Size	150*150*220mm
Machine Size	325*303*428mm
Printing Speed	20-150mm/s
Printing Precision	0.1-0.2mm
Layer Thickness	0.05-0.3mm(adjustable by software)
Model Material	PLA/ABS/PETG/PVA filament
Voltage	110V or 220V
Power	120W
Nozzle Size	0.4mm
Extruder Velocity	30cc/h
Extruder Temperature	230 C (Max260 C)
Best Printing Temperature	≥25 C
Precision	Z-axis0.002mm XY-axis0.01mm
3D Files Format	STL,OBJ,Gcode
Technology	Fused Deposition Modeling
Workstation Compatibility	Windows /Linux
Connection	SD card or USB connection
Software	Createbot software/Cura/Slic3r
Packing Size	430*410*535mm
N.W.:	11kg
G.W.:	17kg



<60db  
Low noise:  
noise less than  
60 db



USB  
printing



color  
screen



Glass  
platform



Metal  
case




One year  
warranty

# MID

1. Firm and stable metal structure design.
2. Enclosed door, keep safe printing environment.
3. With touchscreen operating system, better printing experience.
4. With removable glass platform, smoothen the first layer of model, easy to take out model.
5. Multi-device connection: USB connection( Wifi can also be added); Also available for stand-alone printing: SD card( U disk can also be added).

Technical Specifications	
Machine Color	Black
Build Size	205*205*250mm
Machine Size	385*355*515mm
Printing Speed	20-150mm/s
Printing Precision	0.1-0.2mm
Layer Thickness	0.05-0.3mm(adjustable by software)
Model Material	PLA/ABS/PETG/PVA filament
Voltage	110V or 220V
Power	300W
Nozzle Size	0.4mm
Extruder Velocity	30cc/h
Extruder Temperature	230 C (Max260 C)
Best Printing Temperature	≥25 C
Precision	Z-axis0.002mm XY-axis0.01mm
3D Files Format	STL,OBJ,Gcode
Technology	Fused Deposition Modeling
Workstation Compatibility	Windows /Linux
Connection	SD card or USB connection
Software	Createbot software/Cura/Slic3r
Packing Size	495*465*610mm
N.W.:	17kg
G.W.:	26kg



  
**<60db**  
 Low noise:  
 noise less than  
 60 db

  
 USB  
 printing

  
 color  
 screen

  
 Glass  
 platform

  
 Metal  
 case

  
 One year  
 warranty

# MAX

1. Big print size, high printing precision and printing speed.
2. Stable printing quality.
3. Multi-device connection: USB connection( Wifi can also be added); Also available for stand-alone printing: SD card( U disk can also be added).
4. Enclosed door, keep safe printing environment.
5. Good choice for engineer, innovator, factory for research.

Technical Specifications	
Machine Color	Black
Build Size	280*250*400mm
Machine Size	460*405*685mm
Printing Speed	20-250mm/s
Printing Precision	0.02-0.25mm
Layer Thickness	0.05-0.3mm(adjustable by software)
Model Material	PLA/ABS/PETG/PVA filament
Voltage	110V or 220V
Power	350W
Nozzle Size	0.4mm
Extruder Velocity	30cc/h
Extruder Temperature	230 C (Max260 C)
Best Printing Temperature	≥25 C
Precision	Z-axis0.002mm XY-axis0.01mm
3D Files Format	STL,OBJ,Gcode
Technology	Fused Deposition Modeling
Workstation Compatibility	Windows /Linux
Connection	SD card or USB connection
Software	Createbot software/Cura/Slic3r
Packing Size	570*510*770mm
N.W.:	30kg
G.W.:	41kg



Low noise:  
noise less than  
60 db



USB  
printing



color  
screen



Glass  
platform



Metal  
case



One year  
warranty

**Createbot**

**3D Printer  
S1 S3**

**03**



# S1

1. Small overall dimensions:It occupies little space, is easily movable.
2. Easier to operate, easier to get the model

Technical Specifications	
Machine Color	Black
Build Size	120*120*120mm
Machine Size	252*265*264mm
Printing Speed	20-60mm/s
Printing Precision	0.1-0.2mm
Layer Thickness	0.05-0.3mm (adjustable by software)
Model Material	1.75 PLA/ABS/PETG/PVA filament
Voltage	AC 110V or 220V
Power	60W
Nozzle Size	0.4mm
Extruder Velocity	30cc/h
Extruder Temperature	Max 260 °C
Best Printing Temperature	≥25 °C
Precision	Z-axis0.002mm XY-axis0.01mm
3D Files Format	STL,OBJ,Gcode
Technology	Fused Deposition Modeling
Workstation Compatibility	Windows /Linux
Connection	SD card or USB connection
Software	Createbot software/Cura/Slic3r
Packing Size	350*350*350mm
N.W.:	3.5kg
G.W.:	4.5kg
Type:	DIY(Quick Assembly)
Auto-Leveling:	For choice



Low noise:  
noise less than  
60 db



USB  
printing



Auto  
Leveling



# S3

1. Power failure resume feature
2. Big Print size ,High printing precision and printing speed
3. With Filament Detector , Auto-Leveling, WIFI Function for your choice.

Technical Specifications	
Machine Color	Black
Build Size	315*300*415mm
Machine Size	590*595*608mm
Printing Speed	20-150mm/s
Printing Precision	0.1-0.2mm
Layer Thickness	0.05-0.3mm (adjustable by software)
Model Material	PLA/ABS/PETG/PVA filament
Voltage	110V or 220V
Power	280W
Nozzle Size	0.4mm
Extruder Velocity	30cc/h
Extruder Temperature	Max 260 C
Best Printing Temperature	≥25 C
Precision	Z-axis0.002mm XY-axis0.01mm
3D Files Format	STL,OBJ,Gcode
Technology	Fused Deposition Modeling
Workstation Compatibility	Windows /Linux
Connection	SD card or USB connection
Software	Createbot software/Cura/Slic3r
Packing Size	640*545*260mm
N.W.:	11.5kg
G.W.:	13kg
Type:	DIY(Quick Assembly,only 3 steps)
Resume print after power failure	Yes
Heat bed:	Yes
Filament Detector.:	For choice
Auto-Leveling:	For choice
Wifi Function:	For choice



<60db

Low noise:  
noise less than  
60 db



USB  
printing



Power of  
Resume print



Filament  
Detector



Auto  
Leveling



Wifi  
Function

**Createbot**

**3D Printer  
Pen**

**04**

**PORTABLE POWER SOURCE**

You can be creative anytime and anywhere









**MODEL: 01-012A**

**WEIGHT: 63g**

**LENGTH: 184mm**

**WIDTH: 31mm**

**NOZZLE DIAMETER: 0.7mm**

**FILAMENT DIAMETER: 1.75mm**

**WORKING POWER: 5V 2A**

**WIRE SPEED: 120cm/min**

**TEMPERATURE: 60~245°C**





**MODEL: 04-15S**

**WEIGHT: 40g**

**LENGTH: 160mm**

**WIDTH: 15mm**

**NOZZLE DIAMETER: 0.6mm**

**FILAMENT DIAMETER: 1.75mm**

**WORKING POWER: 5V 2A**

**WIRE SPEED: 120cm/min**

**TEMPERATURE: 180°C**



**Createbot**  
Filament

05



# 3D Printer Filament

## High Precision & High Quality

Seven production lines: 3 finished product assembly lines, 1 printer parts production line, 1 test line, 2 filament production lines. Printer daily output 35pcs, annual output 11000 pcs, Filament daily output 350kg, annual output 60,000kg, Createbot can Strongly OEM&ODM.



ROHS



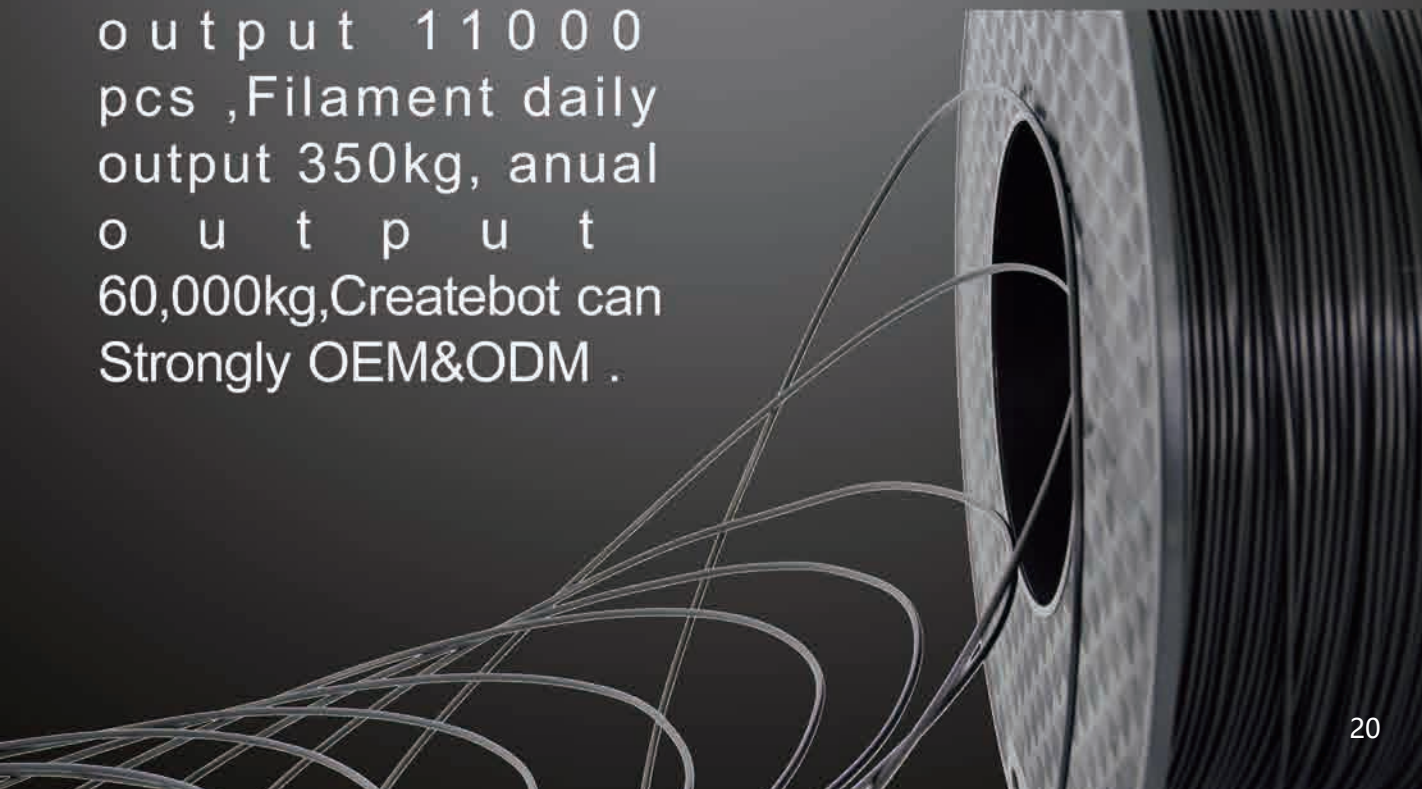
ISO9001



High Precision



No Bubbles





## PLA

PLA is biodegradable. It has good thermal and anti-solvent properties, high gloss and transparency and good heat resistance. Due to its characteristics of slow cooling, high stickiness and odorless, PLA has now become the most commonly used 3D printing materials.

## ABS

ABS engineering plastics has excellent impact strength, good dimensional stability, electrical properties, abrasion and good chemical resistance etc. In 3D printing application, ABS is commonly used in industrial grade printing due to its high strength property.



## PETG

PETG filament has minimal shrinkage and warping. PETG filament is super transparent with a glossy finish. PETG has great chemical resistance, good acidic and alkalic resistance. Superb chemical resistance, acceptable for direct food contact. PETG filament is environmentally friendly and recyclable.







## Carbon

PLA carbon fiber printing consumables are made by adding carbon fiber to PLA through special formulas. It has many excellent properties such as high axial strength and modulus, low density, high specific performance, no creep, and high temperature resistance in non-oxidizing environment, also good at fatigue resistance.

## Flexible

No Bubble, high precision roundness, Good strength and toughness, Good dispersion. Excellent surface gloss, bright color.



## HIPS

High Impact Polystyrene, it is versatile, economical, and impact resistant. No Jamming, No Drawing and No Bubbles makes stable performance.



## Wood

Its a New Composite material made of 20% REAL Wood Powder. Resistant to corrosion and moisture.3D Model printed by Wood PLA, has Wood-Like authenticity , You can nail, drill, dig, sculpture, paste and paint it like real wood.

## Peek

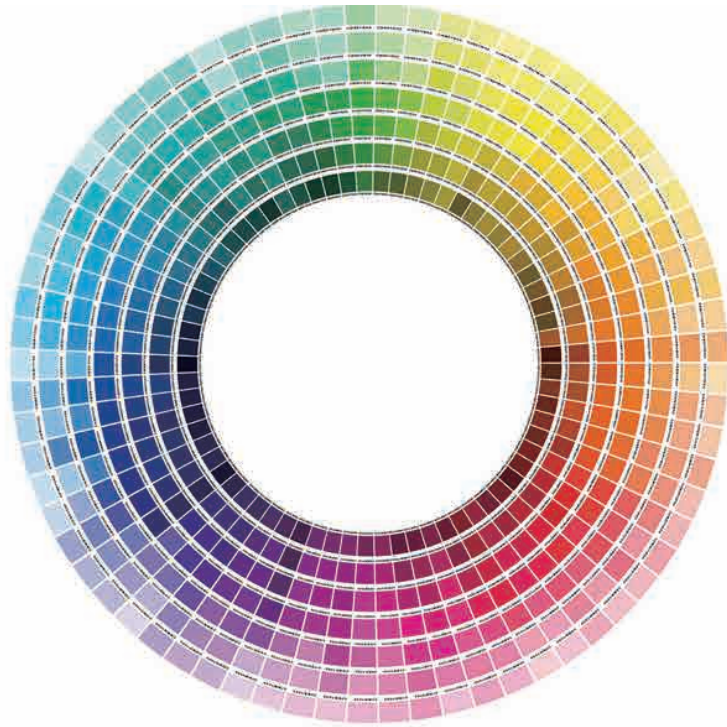
PEEK polymers and their composites have excellent wear resistance in many extremely harsh environments such as high temperature, high load and strong corrosion.It is insoluble in common solvents and has good corrosion resistance to various organic and inorganic chemical reagents.



## Nylon

Nylon filament is a strong durable material.Not as brittle as ABS or PLA. The strength of the filament is remarkable. when using a higher fill setting. Nylon prints are generally very wear resistant.Many users prefer Nylon when printing engineered parts such as gears.





## OME COLOR BASED ON PANTONE

*You can also customize the color you like.*



# Createbot HISTORY



Registered Yueqing  
Kaining Electric Co., Ltd.  
to operate transformers

The first Createbot  
3D printer launched

Investment from  
Wuhu Ai San  
Technology Co.

• 2011.11.24

• 2012.7

• 2012.9

• 2013.7

• 2014

Established 3D  
printing project

Moved to the technology  
incubator and officially  
mass-produced and sold  
desktop-level 3D printers



Registration  
Yueqing Kanin Electronic  
Co., Ltd. Company

Createbot won the  
national high-tech  
enterprise certification

Established the  
Anhui Provincial  
Additive Manufacturing  
Standardization  
Technical Committee

2014.9

2015.9

2016.12

2017.9

2017.10

Established the Ningbo  
Foreign Trade Department

Established Haibei  
Le Ning Education Co., Ltd

The logo consists of a blue rectangle on the left containing the word "Createbot" in white, and a white rectangle on the right containing the word "Service" in blue. Both rectangles are enclosed in a thin blue border.

**Createbot**

**Service**

## SERVICE COMMITMENT

Perfect after - sales service system, always adhere to the principle of serving consumers, make life pleasant. Based on the basic services, create differentiated customized services, become consumers' personal assistant, answer consumers' questions, provide solutions suitable for consumers, and make consumers use the products satisfactorily

## VALUE GUARANTEE

Providing consumers with warm service is the core value in Createbot's value guarantee. National hotline is supporting all consulting service after-sales. No matter presales inquiries or after-sales questions or shape hesitation, Createbot Service Team will handle all of them and provide comfortable and quick service to consumers.

## QUALITY WARRANTY

Return within 7 days without any man-made damages, return or free repair within 8 to 30 days without any man-made damages, 12 month warranty of the complete machine (not including consumable parts). All repair should use original parts from the manufacturer, careful service of the engineers, Createbot provides consumers with quality service, allow consumers to use Createbot shaping products safely and securely to make creation much easier

**Createbot**

**Contact**



TEL: 0086-574-88037579  
Phone: 0086-18668592266



E-mail: [sales@china3dprinter.cn](mailto:sales@china3dprinter.cn)



Youtube :<https://www.youtube.com/channel/UCdrXsD4fGqNFY83-Q5yxVCg>  
Facebook: <https://www.facebook.com/jason.zhu.3557>  
Skype: kalin.wang  
WhatsApp: +86-13685868953  
WeChat: allen311911



AliExpress: <https://createbot.aliexpress.com>  
Alibaba: <https://china3dprinter.en.alibaba.com>  
Official Web: <https://www.createbot.net>



Add: No.5 Building, Economic Development Zone, Fanchang,  
Wuhu City, Anhui Province, China



Yueqing Kanin Electric Co., Ltd. | Wuhu R3D Technology Co., Ltd.

Add: No.5 Building, Economic Development Zone, Fanchang, Wuhu City, Anhui Province, China

TEL:86-0574-88037579

Website:<http://www.china3dprinter.cn>